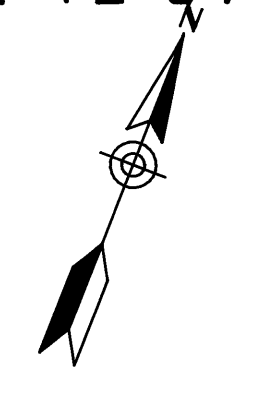


A PLAT OF SEA PINES PUD PHASES 2-3-4

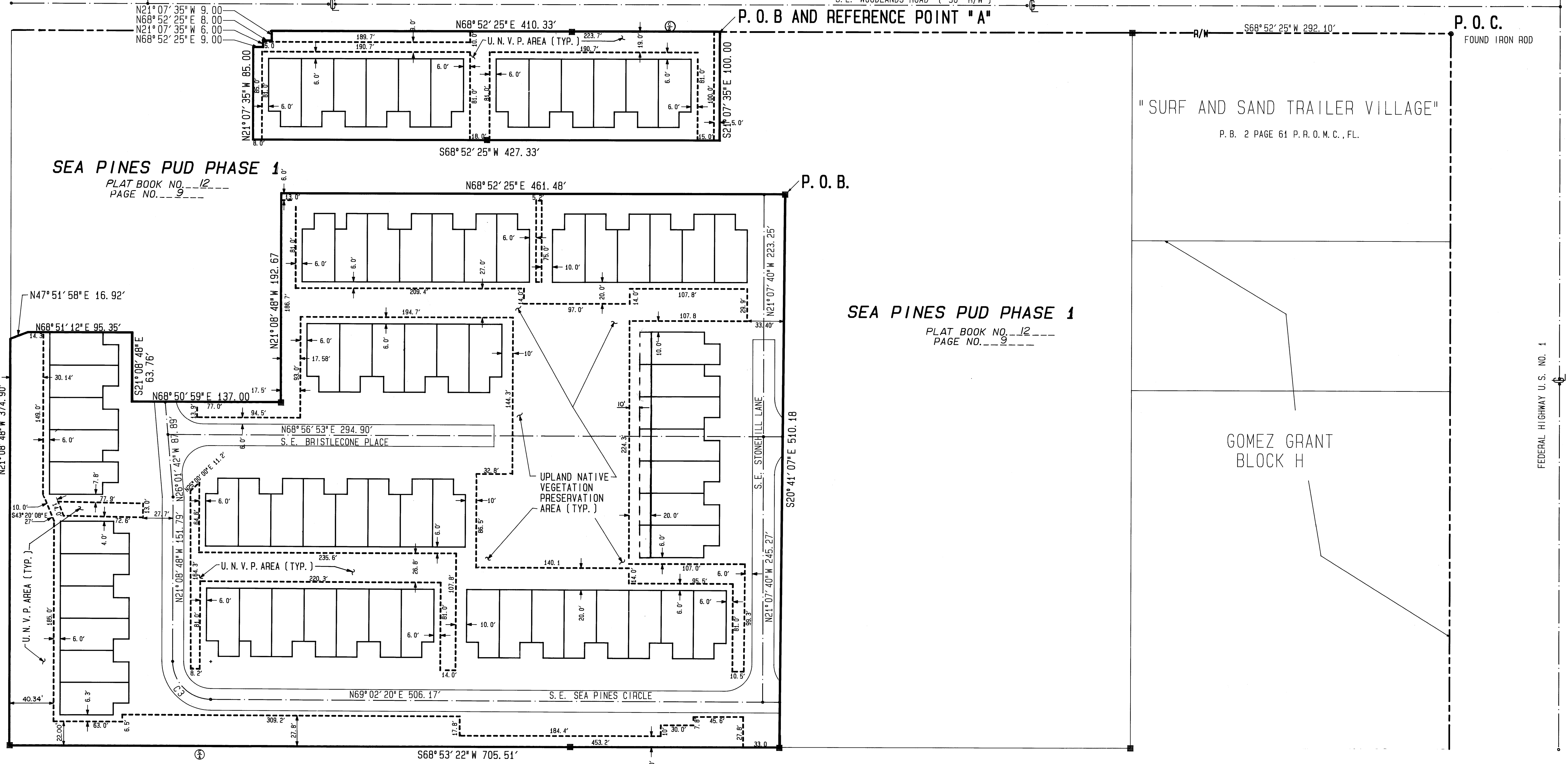
EVERGREEN PARK SUBDIVISION
O. R. BOOK 81 PAGE 425

LYING IN THE UNPLATTED PORTION OF GOMEZ GRANT,
BEING A PORTION OF BLOCK "H" OF AN UNRECORDED
PLAT OF LOTS "A" THRU "N" AT THE GOMEZ GRANT
MARTIN COUNTY, FLORIDA

S. E. WOODLANDS ROAD (50' R/W)



GOMEZ GRANT
BLOCK "H"



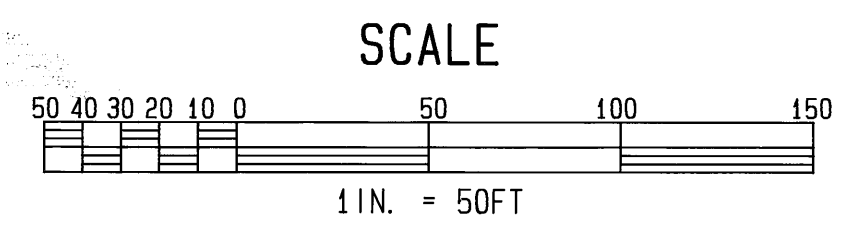
SEA PINES PUD PHASE 1
PLAT BOOK NO. 12
PAGE NO. 9

SEA PINES PUD PHASE 1
PLAT BOOK NO. 12
PAGE NO. 9

"SURF AND SAND TRAILER VILLAGE"
P. B. 2 PAGE 61 P. R. O. M. C., FL.

GOMEZ GRANT
BLOCK "H"

LAKESIDE VILLAGE MOBIL HOME PK. (UNREC)
GOMEZ GRANT BLOCK "G"



LEGEND

- PERMANENT REFERENCE MARKER
- PERMANENT CONTROL POINT
- P.O.B. INDICATES POINT OF BEGINNING
- P.O.C. INDICATES POINT OF CONTROL
- ⊕ CONTROL OF ACCESS
- UTILITY EASEMENT
- - - LANDSCAPE BUFFER
- - - UPLAND NATIVE VEGETATION PRESERVATION AREA BOUNDARY (U. N. V. P. AREA)

Curve #	Radius	Delta	Length	Tangent	Chord/Brq
C3	35.00'	89° 48' 52"	54.86'	34.89'	49.42' S66-03-14.2E

AUGUST, 1990

Keith & Schnars, Inc.
ENGINEERS - PLANNERS - SURVEYORS

141 S. W. FLAGLER AVENUE
STUART, FLORIDA 34994
(407) 287-2626

SEA PINES
UPLAND NATIVE VEGETATION
PRESERVATION AREA BOUNDARY

STUART
DIVISION

PAGE 4 OF 4